
U.S. SUBMARINES, INC.

Description of Available Submarines & Related Products

**U.S. Submarines • Triton Submarines • U.S. Submarine Structures •
Poseidon Undersea Resorts**



JANUARY 2012

Submarine Manufacturing in the U.S.A.

CAPABILITY

Hardened Structures of America & our Partners can design, engineer and build you a submarine of virtually any type, from personal luxury models and commercial units to research submersibles.

We can execute feasibility studies and business plans and our Partners can train your pilots for operations and provide maintenance contracts for everything built.

THE COMPANIES

Our Partner Firms

Our Partners were founded in 1993. The company developed the concept of the personal luxury submarine and has also designed deep submersibles for marine science research, diesel electric submarines, tourist submarines with both steel and transparent acrylic pressure hulls; military patrol and surveillance submarines as well as a line of floating semi and fully submersible underwater structures, residences, and habitats as well as the world™s first sea floor resort, and most recently, the H₂OME, the world™s first sea floor residences. We are also able to offer a variety of specialized smaller subs for yacht based use.

Our Partners are also involved in a wide range of consulting endeavors and develops commercial tourist submarine operations for clients on a world-wide basis.

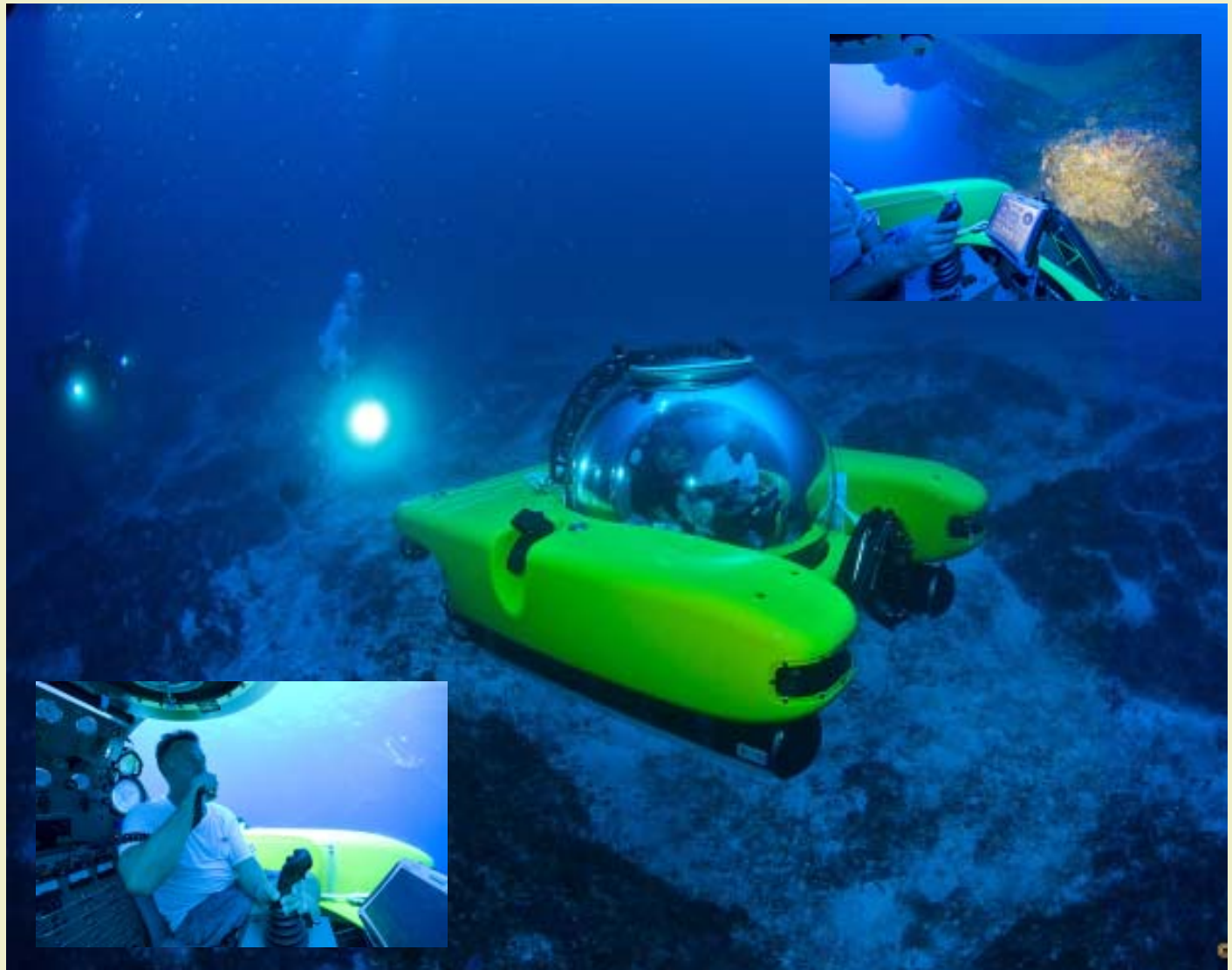


The Smallest Luxury Submarine in the Fleet

TRITON

The Triton 1000 was designed specifically to be carried aboard large yachts. Available in 2- and 3-passenger configurations the basic sub will dive to 305 meters (1000 feet) with versions available with diving depths to 1000 meters (3300 feet).

Our Partner is currently in the process of developing the Triton 36,000/3, the world's deepest diving multi-passenger submersible, capable of diving to the deepest spot in the ocean, the 35,800 ft. Challenger Deep in the Marianas trench.

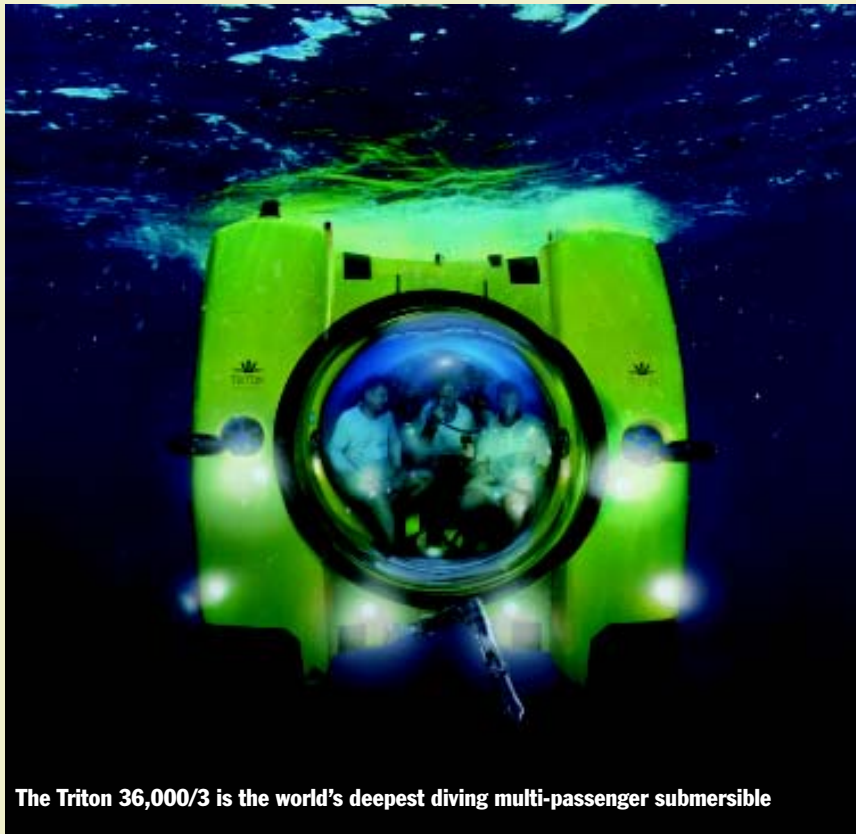


The Most Advanced Deep Submersibles Ever Built

TRITON

We are now delivering the new Triton 3300/3 which will carry three people to depths of 3300 feet or 1000 meters. This is easily the most advanced deep submersible currently available, with integrated touch screen control and monitoring and digital proportional joystick control, extraordinary visibility, and superior maneuverability.

The new 36.000/3 will quite simply revolutionize man's relationship with the deep ocean.



The Triton 36,000/3 is the world's deepest diving multi-passenger submersible



The Ultimate Yacht Accoutrement

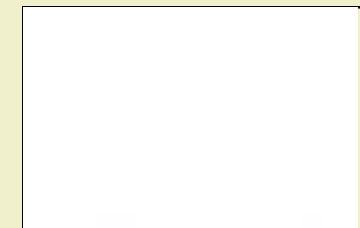
TRITON

Since the first delivery
in December 2007,
We have had a huge interest

from discerning yacht
owners interested in ex-
ploring the undersea world

Triton will be the most
prolific submersible ever
produced and we have
recently taken delivery of
the world's only deep
submersible simulator for
pilot training.

Triton is the only submers-
ible designed specifically
for integrated operation
from large yachts. Prices
begin at \$1.97 million.



A Small Multi-role Diesel Electric Submarine

S-101

The S-101 is a prototype multi-role small diesel electric submarine that is suitable for personal use, harbor patrol & surveillance, launch and recovery from a yacht, commercial inspection work, etc. The submarine is available in depth ratings of from 200 to 500 meters.

Prices begin at \$1.3 million. A used version of this submarine is available for \$540,000.



The World's Most Advanced Small Luxury Submarine

DISCOVERY

The Discovery 1000 is the world's most advanced small submarine. The Discovery has a transparent acrylic passenger compartment and dives to 305 meters. An optional diesel engine increases the submarine's surface range and endurance and a versatile modular design allows the Discovery to be built in configurations that will carry two to seven passengers.

Prices begin at \$2.6 million.

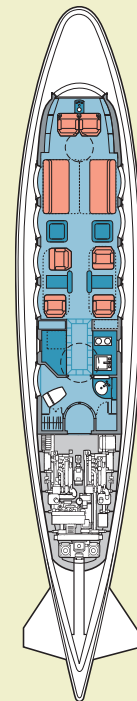


A Mid-Size Luxury Submarine

NOMAD

The Nomad 1000 is the world's first luxury submarine design. The Nomad has a full head and galley and will sleep six in the main passenger compartment on overnight trips. The submarine dives to 305 meters and has a 1000 nautical mile (1850 km) surface range at cruising speed.

Nomad prices begin at \$6.5 million.



A Luxury Submarine with Trans-Atlantic Range

SEATTLE

The Seattle 1000 is a truly remarkable personal luxury submarine available in several configurations. This diesel-electric submarine has a 3000 nautical mile range and can dive to 305 meters (1000 feet).

The price of the Seattle 1000 is \$32 million.

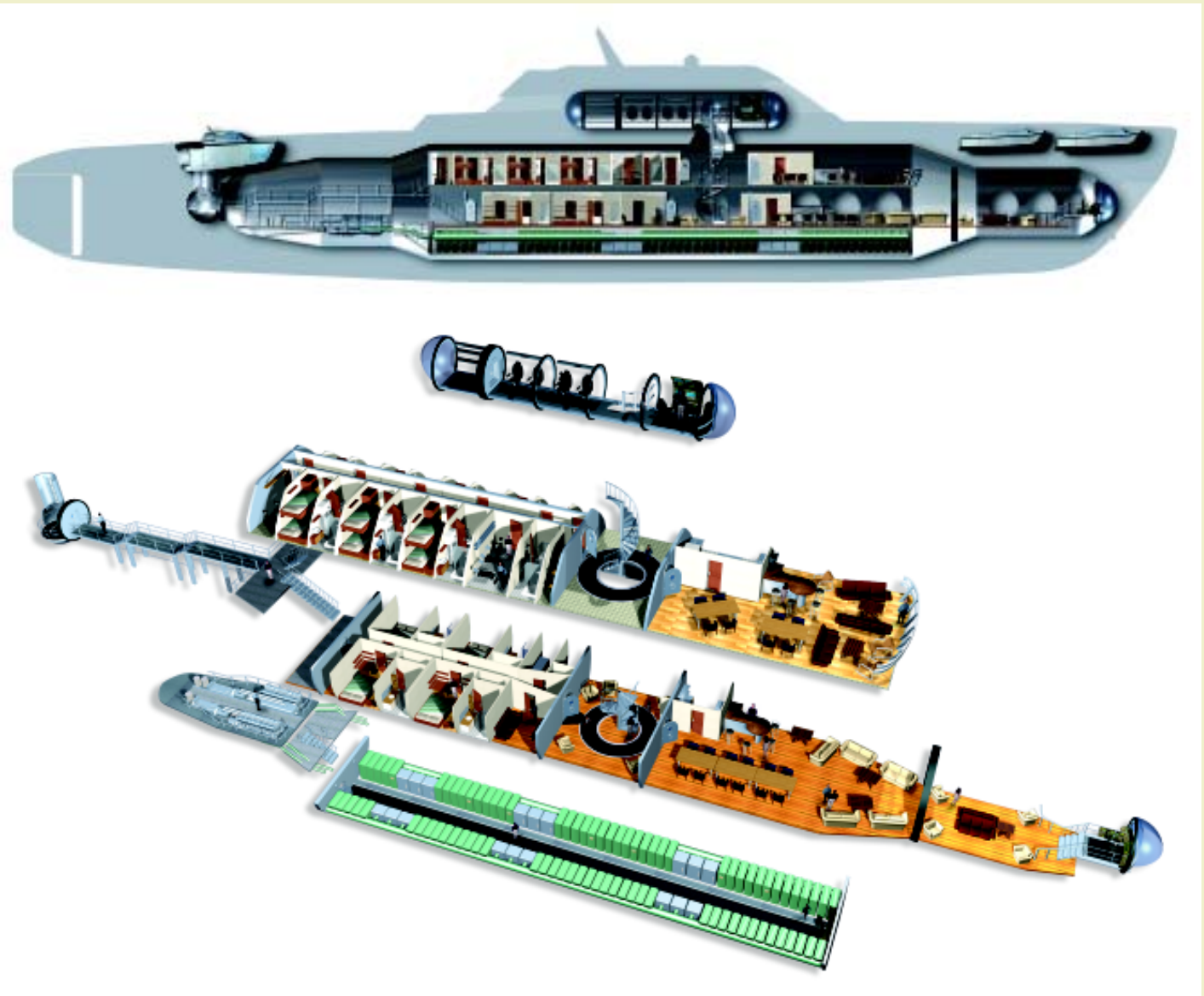


The Ultimate in Personal Transportaton

PHOENIX

At 65 meters (213 feet) in overall length and some 1500 tons displacement the Phoenix 1000 has over 500 square meters of interior space. This \$90 million submarine has a 305 meter (1000 foot) diving depth, trans-atlantic range and even carries an optional small submersible that can dive to depths of up to 2000 meters.

The estimated price of the Phoenix 1000 is \$90 million.



Tourist Submarines Provide Profitable Business Opportunities

TOURIST SUBMARINES

A fleet of over 30 purpose built tourist submarines takes passengers on one-hour journeys of discovery by diving on coral reefs around the world. Last year the industry carried over 1 million passengers and enjoys a perfect safety record over 25 years of operations.

The Company has developed the world's most advanced tourist submarine designs with both steel and transparent acrylic pressure hulls and can provide a turn-key operation.



Hawaii



Italy



Bahamas



Martinique



The Canary Islands



St. Thomas

We Can Provide a Complete Turn-Key Tourist Sub Business

TOURIST SUBMARINES

Operating a tourist submarine can be remarkably profitable with some single submarine businesses earning over \$1 million per month.

HSA and our Partners are world-class experts in this field and we can assist you with every aspect of operational start up.

They build the world's most technically advanced tourist subs - our DeepView series, available from 6- to 66-passengers.



The DeepView series of tourist subs by U.S. Submarines provides incredible viewing for its passengers.



The DeepView 48



The DeepView 16 is an efficient small t-sub.



The DeepView 6 can be yacht based and has a head and wet-bar.



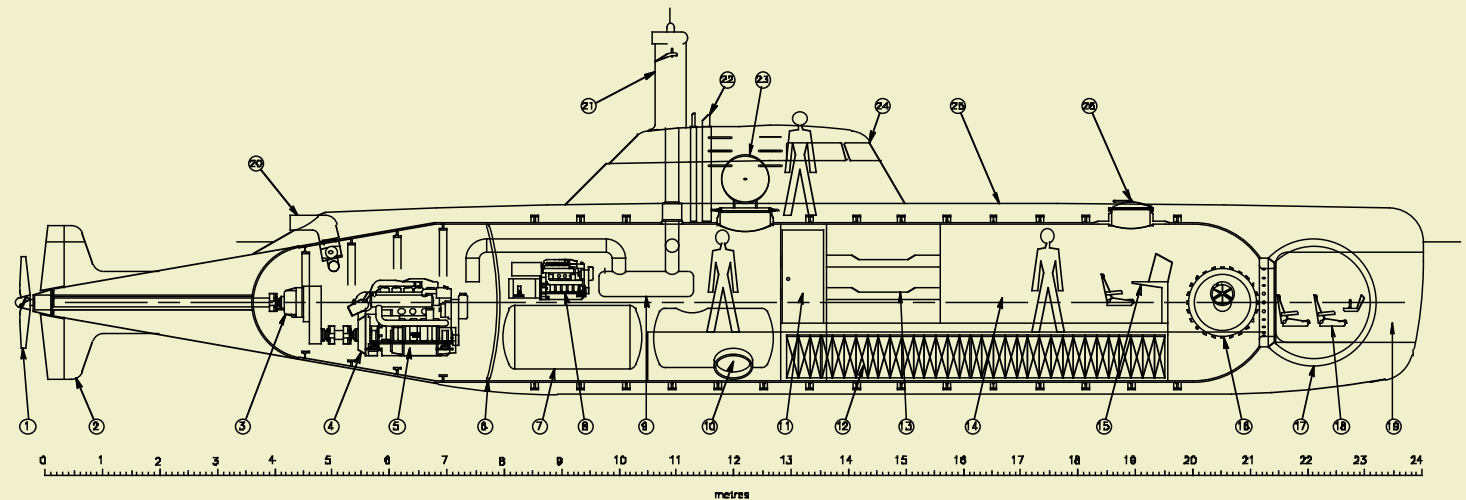
We represent every used t-sub in the world, including this 16-passenger, 100-meter capable sub.

Small Military Submarines Have Excellent Marketing Potential

AVENGER

Our Partners developed a very advanced design for a fast patrol & surveillance/ special forces submarine with extended submerged range. Our advisors believe there is an immediate market for 20 of these submarines.

The principal engineer for this project has built two small diesel electric submarines for the Swedish Navy and several vehicles under contract to the U.S. Government & Special Forces. He also designed the modifications for the Royal Navy's DSRV.



- | | | | | | |
|---|---------------------------------|----|--|----|--|
| 1 | 5 blade propeller | 10 | Wet transfer chamber | 19 | Acrylic protection fairing |
| 2 | Cruciform rudder and hydroplane | 11 | Toilet, Galley opposite | 20 | Diesel exhaust extractor |
| 3 | Transmission | 12 | Battery | 21 | Air induction mast with shut off valve |
| 4 | Diesel engine, 1000kW (1450 hp) | 13 | Bunks for off watch crew | 22 | Telescopic camera periscope masts |
| 5 | Electric motor 700kW | 14 | User defined space | 23 | Main entrance hatch |
| 6 | Bulkhead, 1 bar airtight | 15 | High speed pilot station, port and starboard | 24 | Protected crew area |
| 7 | Liquid oxygen storage | 16 | Watertight safety door | 25 | Free flood deck structure |
| 8 | Closed cycle diesel generator | 17 | 270° acrylic observation sphere, 2.2mOD | 26 | Forward access and NATO rescue hatch |
| 9 | Water air separator | 18 | Forward control station | | |



The World's First Undersea Resort Has Been Designed by U.S. Submarines

POSEIDON

The Undersea Resort is another world's first design from one of our Partners.

Two versions of this luxury resort have been developed, one that is linked to land by a pier and elevator and the other that can be established in the open sea.

The first Undersea Resort is under construction for a private island in Fiji.

Future resorts can be built under an exclusive agreement.



The World's First Sea Floor Residence

H₂OME

We are now able to offer the world's first sea floor residence, the 3600 sq. ft. **H₂OME**. Based on the millions of dollars spent on the development of the Undersea resort engineering the **H₂OME** is a one atmosphere structure where the interior is always at surface pressure. Design depth is between 10 and 18 meters. Access is from shore by pier and elevator or for the autonomous version, by boat or helicopter. Prices begin at \$12 million.



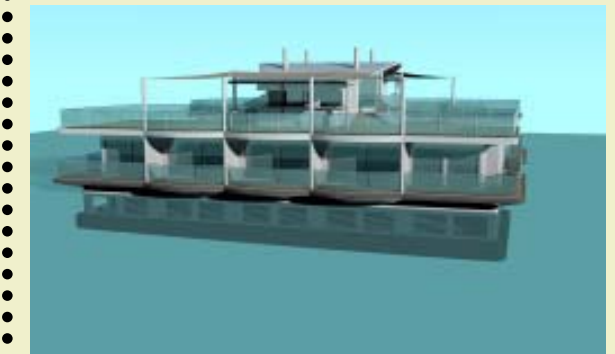
The Ocean Activity Center

OAC

Our SeaRoom Ocean Activity Center is a self-sufficient modular design that consists of a 40-person underwater bar and a 40-person restaurant, five hotel suites with both above water and below water accommodation, a snack bar, gift shop and integrated tourist submarine operation and support center.

The OAC can be based close to shore and linked by a bridge or moored offshore.

A private luxury version is also available.



Submarine Support Vessels

SSVs

Working with world leading naval architects, our Partners developed three remarkable submarine support vessels. The 65' catamaran, of which two are now under construction, provides transportation and support for any HSA sold model with an integrated launch and recovery system. The larger Triton 95 has 9000 mile range in a slim, gyro stabilized high efficiency luxury design while the much larger Triton 195 is an advanced wave-piercing design with internal moon pool.

The Triton 95 SSV carries a Triton aft belowdecks with an integrated launch and recovery system.



The Triton 65' catamaran carries a Triton on a platform aft between the hulls that is lowered into the water to launch and recover the sub.

80m submarine support
Stabilised monohull



Experience Makes the Difference

DEPTH

Management and senior staff comprise the most experienced group of civil submarine & underwater structure specialists in the world today with over 335 years of dedicated experience.

The extraordinary operations experience in virtually every type of civil submarine results in the ability to design and build submarines that are safe, reliable and consummately effective for purpose. Nothing goes into one of these products unless it has been proven effective in sub-sea applications.

DESIGN PHILOSOPHY & PRICING

When it comes to automotive transportation, you can purchase a Hyundai or a Bentley, and both will likely get you to where you want to go. We consider our Partner's products to be the Bentley™s of the seas. We spare no effort and expense to provide absolutely the ultimate product for the subsea environment. By hand selecting the components and hand building these personalized luxury submarines and submersibles completely without compromise - and they are superior in all respects than the offerings of our competitors. They are safer, more comfortable and more effective than any thing else on the market and they are sold by senior management exclusively - management that prides itself on providing the ultimate customer service, 24/7.

The deep subsea environment is a harsh-taskmaster and it is no place to compromise. You can trust your lives and the lives of your friends, family, guests and passengers to us with the knowledge that you are underwater in the finest vehicle or structure that money can buy and experience can build.

After all, no one wants to go to 3000 feet in a cheap submarine!



Additional Information

Contact

- Julie Kramer, President
- 1-877-603-7233 - Toll Free
- 1-402-613-8290 - Direct
- Email: jkramer@hardenedstructuresofamerica.com
- Email: info@hardenedstructuresofamerica.com
- www.hardenedstructuresofamerica.com
- www.custombombshelters.com
- www.nationalPREPAREstore.com

